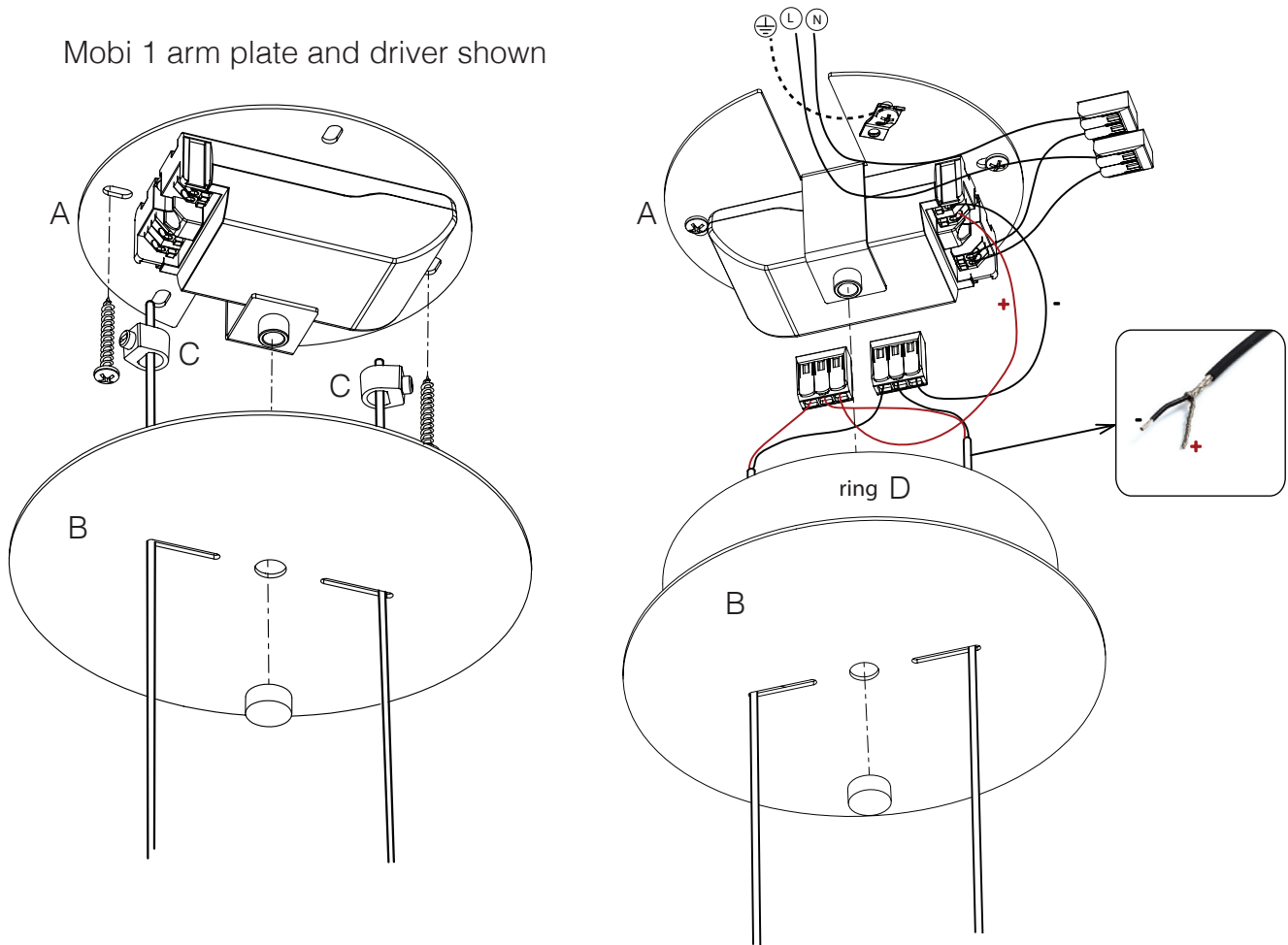


Mobi 1 arm plate and driver shown

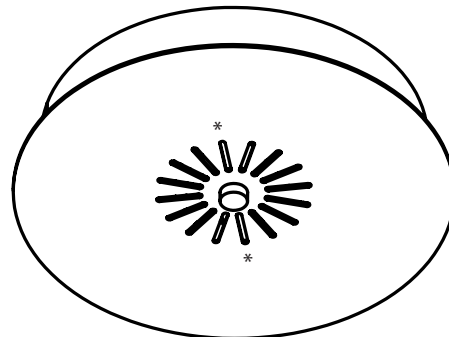


Instructions

1. Ensure main voltage is turned off before working on junction box.
2. Install ceiling bracket (A) by screwing onto junction box.
3. Thread cables into the plate (B) and secure with cable grips (C).
4. Attach plate to bracket **without** the ring (D).
5. Adjust the position and angle of the Mobi arm as desired, adjusting the cable grips (C) as needed.
6. Once desired position is attained, detach the plate and place the ring (D) in place.
7. Connect the wires from the Mobi arm to the driver. Please note: each Mobi arm requires one driver. If connecting multiple arms, connect in series connection (see next page for wiring diagram).
8. Once low voltage wires are connected in series connection, main voltage can be turned on.
9. Attach the plate to the bracket once again and secure in place with lock nut. Installation is now complete.

For Mobi 2 and 3 arm:

One driver is needed for each Mobi arm. Follow steps 3-5 above for each Mobi arm. Use wiring diagram on next page to connect drivers in series connection. When threading cables into the plate, make sure that cables are threaded through holes opposite each other: for example, the two holes marked with an asterisk (*) to the right.



Wiring Diagram for Series Connection

